

# Biotinylated Cynomolgus CD3E&CD3D/CD3 epsilon&CD3 delta Protein (Primary Amine Labeling)



Cat. No. CD3-CM201B

Description	
Source	Recombinant Biotinylated Cynomolgus CD3E&CD3D/CD3 epsilon&CD3 delta Protein (Primary Amine Labeling) is expressed from HEK293 with hFc tag at the C-Terminus. It contains Gln22-Asp117 (CD3E) and Phe22-Ala105 (CD3D).
Accession	Q95LI5.2(CD3E)&Q95LI8(CD3D)
Molecular Weight	The protein has a predicted MW of 36.9 kDa (CD3E) and 35.4 kDa (CD3D). Due to glycosylation, the protein migrates to 58-62 kDa and 44-46 kDa based on Bis-Tris PAGE result.
Endotoxin	Less than 1 EU per µg by the LAL method.
Purity	> 95% as determined by Bis-Tris PAGE; > 95% as determined by HPLC

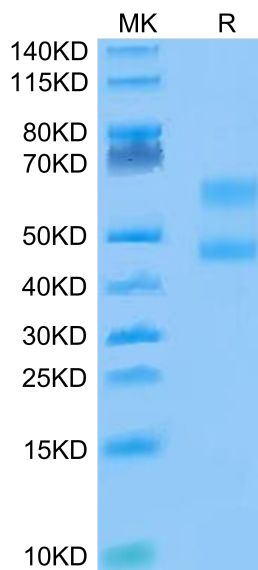
Formulation and Storage	
Formulation	Lyophilized from 0.22 µm filtered solution in PBS (pH 7.4). Normally 8% trehalose is added as protectant before lyophilization.
Reconstitution	Centrifuge the tube before opening. Reconstituting to a concentration more than 100 µg/ml is recommended. Dissolve the lyophilized protein in distilled water.
Storage	-20 to -80°C for 12 months as supplied from date of receipt. -80°C for 3 months after reconstitution. Recommend to aliquot the protein into smaller quantities for optimal storage. Please minimize freeze-thaw cycles.

**Background**

T-cell surface glycoprotein CD3 epsilon&CD3 delta chain, also known as CD3E&CD3D, are single-pass type I membrane proteins. When antigen presenting cells (APCs) activate T-cell receptor (TCR), TCR-mediated signals are transmitted across the cell membrane by the CD3 chains CD3D, CD3E, CD3G and CD3Z. All CD3 chains contain immunoreceptor tyrosine-based activation motifs (ITAMs) in their cytoplasmic domain.

## Assay Data

### Bis-Tris PAGE



Biotinylated Cynomolgus CD3E&CD3D on Bis-Tris PAGE under reduced conditions. The purity is greater than 95%.

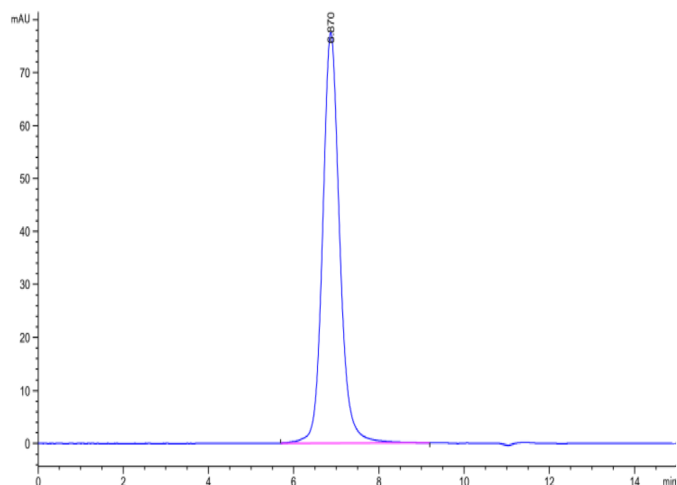
### SEC-HPLC

# Biotinylated Cynomolgus CD3E&CD3D/CD3 epsilon&CD3 delta Protein (Primary Amine Labeling)



Cat. No. CD3-CM201B

## Assay Data

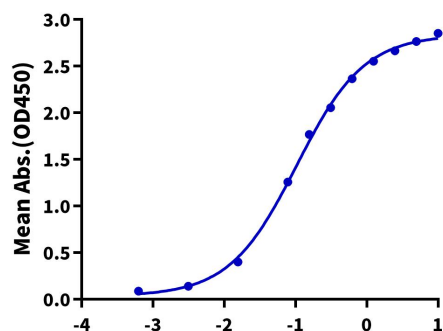


The purity of Biotinylated Cynomolgus CD3E&CD3D was greater than 95% as determined by SEC-HPLC.

## ELISA Data

### Biotinylated Cynomolgus CD3E&CD3D, hFc Tag ELISA

0.2µg Anti-CD3 Antibody, hFc Tag Per Well



Immobilized Anti-CD3 Antibody, hFc Tag at 2µg/ml (100 µl/well) on the plate. Dose response curve for Biotinylated Cynomolgus CD3E&CD3D, hFc Tag with the EC50 of 0.10µg/ml determined by ELISA.

Log Biotinylated Cynomolgus CD3E&CD3D, hFc Tag Conc.(µg/ml)